

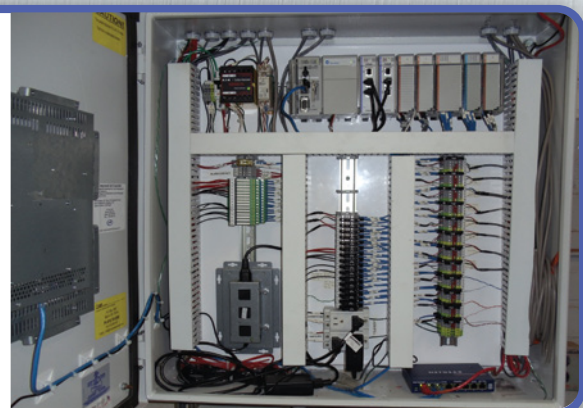


CAMLink™ Compressed Air Automation Series 6000



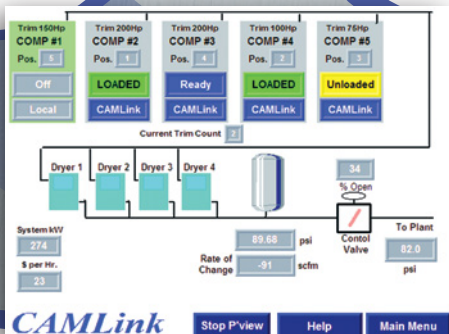
CAMLink™ Compressed Air Automation monitors changes in the supply pressure to 0.01 psi and responds to the “Rate of Pressure Change” by either adding or deleting compression capacity. Most compressor systems have too much capacity on-line at all times in order to satisfy peak demands and prevent pressure dropping below acceptable levels. With the cost of compressed air at approximately 10x that of direct electrical power this type of operation is nothing but wasteful of energy costs. Differences in Pressure Set Points, Pressure Switch Dead-bands, and Pressure Losses make it virtually impossible to coordinate multiple compressors for optimal operation. CAMLink™ Compressed Air Automation coordinates all compressors in one of several sequential modes. Only one compressor is allowed to “trim” the demand changes. As fewer compressors are required, CAMLink™ Compressed Air Automation automatically controls the “unloaded cool down time” and then stops the compressor.

The CAMLink™ Compressed Air Automation Series 6000 is an Allen-Bradley based control system. Designed to support multiple compressors, the CAMLink™ Compressed Air Automation Series 6000 provides unparalleled optimized and coordinated compressor system operations. The CAMLink™ Compressed Air Automation Series 6000 has the flexibility to support the CAM Demand Expander™ as well as other system add-ons. The system will automatically adjust the number of compressors running/loaded to meet your facilities current air demands. Fixed or automatic rotation is available with the CAMLink™ Compressed Air Automation Series 6000 depending on your installed horsepower. The Series 6000 also offers the CAM developed Base and Trim Expert Analysis for the ultimate in system control.



**CAMLink™
“Rate of Change”
Analysis**

**Nonproprietary
Hardware**

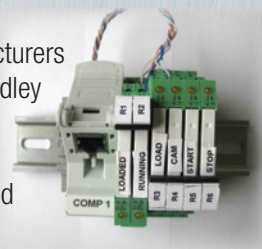


**Controls
all types of
compressors**

**Compressors
connect with
CAT5 Cable**

Features & Benefits

- Controls Multiple Compressor Manufacturers
- Non Proprietary hardware by Allen-Bradley
- Control up to 12 compressors
- Local and CAMLink™ settings
- Controls rotary screw, reciprocating and centrifugal compressors
- Optional hardened touch screen WonderWare Graphical Operator interface
- NEMA4 Enclosure
- Flexible I/O options
- Supports RS232, RS485, Ethernet, and Modbus
- Designed to support the CAM Demand Expander™



System Add-ons Available

- Chilled Water Air Dryer
- Compressed Air Filtration
- CAM Demand Expander™